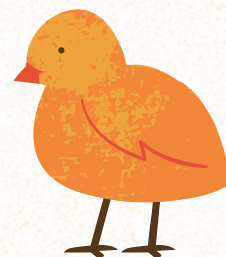
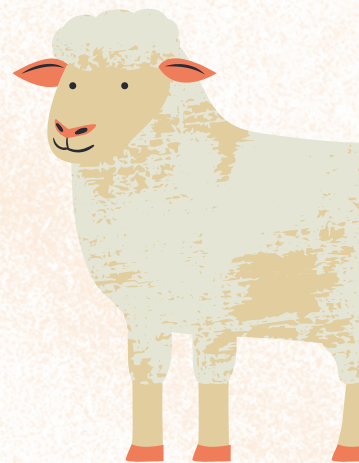




97TH ANNUAL KIMBA SHOW 2025



SATURDAY 20TH SEPTEMBER

"ALL CREATURES GREAT AND SMALL"

KIMBA RECREATION RESERVE, KIMBA SA

WWW.KIMBASHOW.COM



**BOOK YOUR
ENTRIES!**



General Rules & Conditions of Entry - Competitors must familiarise themselves with the general rules and conditions of entry as well as information specific to individual competitions/rings.

ENTRIES, GATE TICKETS & MEMBERSHIP

1. Horse entries close Wednesday 17 September, 2025 via Showday Online or to: Email horses@kimbashow.com.au; or post to: PO Box 414, KIMBA SA 5641. Late entries will be accepted but will attract a \$10 late fee per combination.
2. **MEMBERSHIP:** All exhibitors must be a member of Kimba AH&F Society Inc **Membership is included in the gate tickets which must be purchased online prior to the show through Showday Online or contact the convenor by email to horses@kimbashow.com.au**
3. Entry fees include compulsory insurance.
4. All exhibitors and horses enter at their own risk and must sign a waiver upon entering.
5. The Kimba AH&F Society Inc. shall not be responsible for any damage or injury occasioned to any exhibit or property of any exhibitor(s) from any cause whatsoever.
6. The Kimba AH&F Society Inc. reserves the right (on veterinary advice) to refuse any animal, if judged unfit or diseased, to take part in any way, and for the animal to be removed from the grounds. Veterinary's decision is final.

RULES, SAFETY & GOVERNANCE

7. The Kimba AH&F show will be conducted in accordance with the rules, regulations and bi-laws of EA Australia <https://www.sa.equestrian.org.au/sports> . Competitors are advised it is their responsibility to read and abide by the EA rules of competition.
8. Competitors may enter in any or all rings provided rules are abided by as per each ring.
9. All rings will run concurrently. See individual ring programmes for starting times.
10. Conflict of classes. The programme has been prepared to avoid delays in competition, however, if there are potential clashes, the competitor must advise the stewards or convenors. Similarly, if a competitor withdraws from classes please advise stewards so classes are not held up waiting.
11. The organising committee and ground jury reserve the right to alter the programme, judges or schedule. The show society reserves the right to combine, alter or delete classes with insufficient entries.
12. Random swabbing may take place at this show. The Kimba AH&F Society Inc. reserves the right to test any animal for drug or stimulant, but will not be held responsible for any injury or death caused by such a test. The bylaws on the test and swabbing approved by the SA branch of EA apply.
13. STALLIONS are permitted in all rings except show hack and hunter classes but must be handled or ridden at all times by a person over 18 years; under adequate control at all times; display the required stallion identification disc.
14. Should a competitor require a strapper to hold a horse in the ring they must be suitably attired with full covered shoes on.
15. All riders anywhere on the grounds are required to wear EA approved safety helmets and boots whilst mounted. Please check your helmets are compliant to current regulations.
16. All horse and rider gear including saddlery and riding apparel must be in good condition and working order. Random checks for safety of gear may take place. Any competitor with gear deemed to be unsafe will not be allowed to compete.
17. The judge's decision is final, subject to all other conditions being met.
18. All protests shall be in writing to the Secretary accompanied by a \$20 protest fee, to be lodged with the convenor no later than 30 minutes after the event.
19. Dogs must be kept on a leash at all times.

YARDS & CAMPING

20. Horse stalls are available at \$10 per stall for the weekend. All bedding and manure must be removed from stalls onto designated heaps before departure.
21. Overnight camping is welcome. A fee of \$10 applies with use of showers in the sporting complex included. Camping and stall fees are to be paid with entries.
22. There are NO Eftpos or ATM facilities at Kimba Recreation Reserve. There is an ATM at ANZ Bank, High Street Kimba.
23. Lunch breaks will be notified via public address system to suit events where possible.
24. All rules, regulations, programmes and entry forms are available at www.kimbashow.com.au

RING 1 - SHOWJUMPING

25. It is the competitor's responsibility to make themselves familiar with Kimba AH&F Society Inc., Equestrian Australia, and F.E.I. rules prior to exhibiting horses in Ring 1.
26. Ring 1 is affiliated with Equestrian South Australia, where classes are official and all classes will be run under EA rules as amended, which can be found at www.equestrian.org.au/jumping-rules
27. All horses entered in official affiliated Show Jumping events must be registered with EA, carry current performance cards. All owners must be current EA members. Failure to comply **may** result in withholding of prize money & disqualification.
28. **Juniors:** Athletes may take part in competitions for Junior's until the end of the calendar year they reach the age of 18. Juniors can compete in Championships, Royal Shows and competitions which count for grading from the beginning of the calendar year in which they reach the age of 12 years.
29. No horse may have more than 3 class starts on any day, without express permission from the ground jury, (if a horse fails to complete 2 first rounds an exemption MAY be granted at the ground jury's discretion).
30. In classes 1-9, horses may compete in a maximum of 3 events per day. Events where prize money totals \$100 or more horses must be registered with EA and hold a current competition licence.

RING 2

31. At Kimba AH&F Show, all classes for ponies, galloways and hacks in the open show hunter, show hack and rider classes will be "open to all competitors" for the purpose of royal show qualifications but with no restriction in regard to affiliation.
32. It is the competitor's responsibility to make themselves familiar with Kimba AH&F rules and EA rules prior to exhibiting / showing horses in ring 2.
33. Ring 2 will be run under EA rules as amended, which can be found at www.equestrian.org.au under Show Horse.
34. Riders age to be their age on the day of the show.
35. All local events must be a local horse shown by a local exhibitor. A local horse to be owned or leased by a local resident (either living or working) in the Kimba council area, for a minimum of 3 months prior to the event.
36. All Pony Club events to be ridden in official PC uniform and riders to be financial members of a pony club. If riding as an Interschool competitor, the rider must be in the uniform of the school they attend and are representing.
37. All riders must wear EA approved helmets and riding boots at all times whilst mounted.
38. Persons leading horses/ponies must wear appropriate covered shoes or boots.
39. Tiny Tot riders to be 10 years and under, classes are open to led riders only and are for riders unable to ride unassisted.
40. Tiny Tots are eligible to compete in any other open event but must remain led at all times during the show in all rings.
41. Tiny Tot's lead-rein preferably to be attached to the horse's noseband.
42. Pairs Events can be entered singly and paired on grounds.
43. Riders and Horses may compete in any or all rings, but classes may not be held up.
44. All horses must be bitted, and handlers must wear appropriate attire including covered shoes.

DEFINITIONS

45. **Maiden:** Maiden classes are for horses that have never won a first place at any agricultural show or gymkhana.
46. **Novice:** Horse/rider who has not won an open championship in an Open hack/rider class at an Agricultural/affiliated show.
47. **Pony:** 14 hands and under
48. **Galloway:** Over 14hh and not exceeding 15hh
49. **Hack:** Over 15hh
50. **Show Hunter:** A more solid type of show horse displaying heavier bone structure than a show hack
51. **Weight Classes:** Horses in lightweight classes are not eligible for heavyweight classes and vice-versa
52. **Local:** see rule 35 above.

RING 3

53. All exhibitors and horses enter at their own risk and must sign a waiver upon entering.
54. Persons leading horses/ponies must wear appropriate covered shoes or boots.
55. Riders age to be their age on the day of the show.
56. Correct helmet and riding boots must be worn at all times when mounted. Helmets must be 5 years old or less and have not been involved in an accident. Riding boots must be fully enclosed with flat sole. Please ensure both are compliant prior to this event.
57. Ridden Attire - Collared shirt with full length sleeves, Moleskins, jeans, jodhpurs or official PC uniform will be accepted. No holes in clothing etc Clean, neat and tidy. (Jacket, tie, vest or hacking jackets and plaiting of horses is optional)
58. Horses must wear a bit, no bosals or halters will be allowed. No head checks, tie downs, martingales or running reins. No boots on horses in the ring
59. Classes may be combined at committee discretion.
60. The decision of the judge is final. No discussion will be entered into.

Thanks to our Sponsors of the Horses in Action

Leah Harradine

Cliff Farms

Good Country Law

Nalino Proprietors

RB & RD Winen

and others - we thank you for your valued support of our show.

Section A – Horses in Action

Rules & Information

ENTRY AND PRIZE INFORMATION

All Horses in Action enquiries and entries to convenor via phone or email: horses@kimbashow.com.au

Entries close 8pm Wednesday 17 September, 2025 through ShowDay online <https://showday.online/show/kimba>

Late entries will be accepted but will attract a \$10 late fee per combination.

Email: horses@kimbashow.com.au

Post to: Kimba AH&F Society Inc. PO Box 414, KIMBA SA 5641

All programmes, entry details, waivers and entry forms can be found in a separate HIA booklet on the show's website.

Competitors must familiarise themselves with the general rules and conditions of entry as well as information specific to individual competitions/rings. All competitors must be a financial member of Kimba AH&F Society Inc. Membership must be paid with entries and include gate entry to the show. Any gate tickets not posted or collected prior to show day will be available at the gate. Camping and yards are available and must be booked and paid with entries.

Ring 1 – Showjumping Entries as stated per each class	Prizes - as stated per each class Trophies - The following trophies are to be awarded through points gained in the show jumping rings at affiliated shows of EPSA. Results for these trophies are collated by the EP Show jumping Club. Carr-LeBrun Cup for most points gained by a junior horse and rider combination. <i>Donated by Bill and Lynette LeBrun</i> Boylan Cup for most points gained by a senior horse and rider combination. <i>Donated by The Boylan Family</i> Traeger Trophy: for horse with the most clear rounds, junior and senior. <i>Donated by Helen and Gavin Traeger</i>	
Ring 2 – Hack Ring	Entry - \$25 per horse (Includes Ring 3)	1 st \$5 2 nd \$3 or various prizes and vouchers
Ring 2 - Led Classes 9-11 Ring 3 – Led Classes 76-92	\$5/class only if not entering any ridden classes	1 st \$5 2 nd \$3
Ring 3 – Tiny Tots Classes 67-75	\$25 per horse (Includes Ring 2)	1 st \$5 2 nd \$3 or various prizes and vouchers
Competitors may enter classes in both Rings 1 & 2 but classes will not be held up.		

Section A – Horses in Action

Ring 1 Showjumping

Convenor – Kerri Cliff (ph. 0428 272 676)

Email: horses@kimbashow.com.au

Judge: Deb Henderson; Course Builder: Bill Parker

Saturday September 20th, 2024 – 10am start

PLEASE NOTE: In classes 1 – 8 horses may compete in a maximum of 3 events per day. Events where prize money totals \$100 or more, horses must be registered with EA and hold a current competition licence. Organisers have the right to alter the programme on the day to suit competitor numbers.

CLASS	1 st	2 nd	3 rd	Entry
1. Showjump 40cm.....	Ribbon for 2 clear rounds			2.00
All competitors may complete 2 rounds Second round to be raised.				
2. Showjump 60cm Article 238.2.2 Junior.....	15.00	10.00	5.00	2.50
Showjump 60cm Article 238.2.2 Senior	15.00	10.00	5.00	2.50
3. Showjump 70cm Article 238.2.2	15.00	10.00	5.00	2.50
4. Showjump 80cm Article 238.2.2	20.00	15.00	10.00	2.50
5. Showjump 95cm Article 238.2.2	25.00	15.00	10.00	3.00
6. Showjump 1.05m Article 238.2.2	50.00	30.00	20.00	6.00
7. Showjump 1.15m Article 238.2.2	55.00	35.00	25.00	6.50
8. One Round Stakes 110cm (Table C) Article 239.....	55.00	35.00	25.00	6.50



HOW TO TIME YOUR JUMPS



Section A – Horses in Action

Ring 2 – Open Hack Ring

Convenors – Caitlin Schaefer (ph. 0439 681 677)

– Megan Larwood (ph. 0415 013 787)

Email: horses@kimbashow.com.au

Saturday September 20th, 2025 – 9.30am start

Show Horse & Show Hunter Hacks, Galloways & Ponies

Please ensure you familiarise yourself with the rules have an up-to-date programme by checking the Kimba Show website or ShowDay Online. Any changes to program will be posted on the show website & Facebook page.

Led Classes

9. Led Pony ne 14hh

10. Led Galloway ne 15hh

11. Led Hack over 15hh

Show Pony Classes

12. Novice Pony ne 14hh

13. Pony ne 12hh

14. Pony over 12hh ne 13hh

15. Pony over 13hh ne 14hh

16. Lightweight Pony ne 14hh

17. Heavyweight Pony ne 14hh

18. Open Pony ne 12hh

19. Open Pony over 12hh ne 14hh

20. **Champion and reserve Champion Pony**

Winners from classes 12-19 eligible

Show Hunter Pony Classes

21. Novice Show Hunter Pony ne 14hh

22. Show Hunter Pony ne 12hh

23. Show Hunter Pony over 12hh ne 13hh

24. Show Hunter Pony over 13hh ne 14hh

25. Lightweight Show Hunter Pony ne 14hh

26. Heavyweight Show Hunter Pony ne 14hh

27. Open Show Hunter Pony ne 12hh

28. Open Show Hunter Pony over 12hh ne 14hh

29. **Champion & Reserve Show Hunter Pony**

Winners from classes 21 – 28 eligible

Show Galloway Classes

30. Novice Galloway over 14hh & ne 15hh

31. Galloway over 14hh & ne 14.2hh

32. Galloway over 14.2hh & ne 15hh

33. Lightweight Galloway over 14hh & ne 15hh

34. Heavyweight Galloway 14hh & ne 15hh

35. Open Galloway over 14hh & ne 15hh

36. **Champion & Reserve Champion Galloway**

Winners from classes 30-35 eligible

Open Junior Rider Classes

37. Rider 8 years and under

38. Rider 9 years and under 12 years

39. Rider 12 years and under 15 years

40. Rider 15 years and under 17 years

41. **Champion Junior Rider**

Winners from classes 37-40 eligible

42. Local Pony, Galloway or Hack

Open Senior Rider Classes

43. Rider 17 years and under 21 years

44. Rider 21 years and over

45. **Champion Senior Rider**

Winners from classes 43-44 eligible

Show Hunter Galloway Classes

46. Novice Show Hunter Galloway 14hh & ne 15hh

47. Show Hunter Galloway over 14hh & ne 14.2hh

48. Show Hunter Galloway over 14.2hh & ne 15hh

49. Lightweight Show Hunter Galloway 14hh - 15hh

50. Heavyweight Show Hunter Galloway 14hh - 15hh

51. Open Show Hunter Galloway over 15hh ne 16hh

52. **Champion & Reserve Show Hunter Galloway**

Winners from classes 46 – 51 eligible

Show Hack Classes

53. Novice Hack over 15hh

54. Hack over 15hh & ne 16hh

55. Hack over 16hh & over

56. Lightweight Hack over 15hh

57. Heavyweight Hack over 15hh

58. Open Hack over 15hh

59. **Champion & Reserve Champion Hack**

Winner from classes 53-58 eligible

Show Hunter Hack Classes

60. Novice Show Hunter Hack over 15hh

61. Show Hunter Hack over 15hh ne 16hh

62. Show Hunter Hack over 16hh

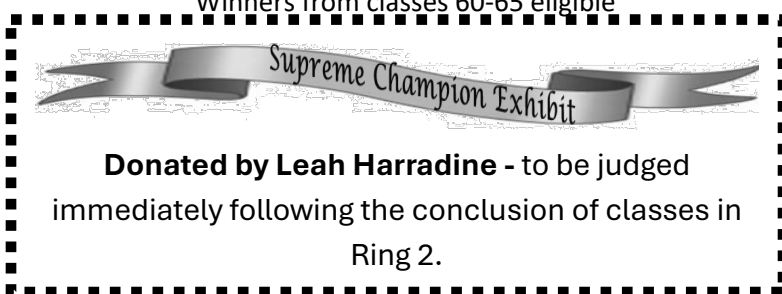
63. Lightweight Show Hunter Hack over 15hh

64. Heavyweight Show Hunter Hack over 15hh

65. Open Show Hunter Hack over 15hh

66. **Champion & Reserve Show Hunter Hack**

Winners from classes 60-65 eligible



Section A – Horses in Action

Ring 3 - Fun

Convenors – Caitlin Schaefer (ph. 0439 681 677)

– Megan Larwood (ph. 0415 013 787)

Email: horses@kimbashow.com.au

Saturday September 20th, 2025 – 9am start

Tiny Tots and Led Breeds

Tiny Tots

- 67. Tiny Tot Smartest on Parade
- 68. Tiny Tot Leading Rein mount
- 69. Tiny Tot Beginners mount
- 70. Tiny Tot Rider
- 71. Tiny Tot Monte Carlos (spin the bottle)
- 72. Hairiest Pony
- 73. Friendliest Pony
- 74. Quietest Pony
- 75. Longest Tail



Smartest on Parade

- 76. Led Smartest on Parade 10 years & under
- 77. Led Smartest on Parade 11 years & under 18
- 78. Led Smartest on Parade 18 years & over

Handlers

- 79. Junior Handler 10 years & under
- 80. Junior Handler 11 years & under 18
- 81. Senior Handler 18 years & over

Led Breed Classes

- 82. Led Miniature Pony
- 83. Led Shetland Pony
- 84. Led Welsh Pony
- 85. Led Riding Pony
- 86. Led Thoroughbred
- 87. Led Quarter Horse
- 88. Led Coloured Horse
- 89. Led Australian Stock Horse
- 90. Led Standardbred
- 91. Led Heavy Horse
- 92. Led any other breed
- 93. **Champion & Reserve Champion Led Breed Exhibit**
Winners from classes 82 - 92 eligible
- 94. **Fancy Dress** (time will be given to get ready and judged separately to other classes). *Time will be advised on the day*

Please ensure you familiarise yourself with the rules have an up-to-date programme by checking the Kimba Show website or ShowDay Online. Any changes to program will be posted on the show website & Facebook page.



An award will be given to the local competitor/horse combination gaining the most points won over the day. Events in all rings will be included in the points.



2024 Supreme
Champion Led Breed
Judge Destiny Franklin



Judge Kellie Crosby & Sponsor Leah Harradine
With the 2024 Supreme Champion



Kimba AH & F Society Show

Saturday September 20th, 2025

Showjumping Entry Form



Details		Showjumping Events											
Riders Name	Horses Name	EA # If applicable	PIC # Compulsory	1 \$2.00	2-Snr \$2.50	2-Jnr \$2.50	3 \$2.50	4 \$2.50	5 \$3.00	6 \$6.00	7 \$6.50	8 \$6.50	Total
Sub Totals													
Name:									Entries Total				
Address:									Camping \$10				
Email:		Phone:							Stables ____ @ \$10				
Membership – all riders must be members. Tickets purchased will include membership. Tickets must be pre-purchased with entries through ShowDay Online prior to show day.													
									Grand Total				

Official Events where prize money totals \$100 or more are conducted under current EA Rules as amended

All horse entries to be received by **Wednesday 17 September, 2025** please.

<https://showday.online/show/kimba>

Email: horses@kimbashow.com.au

or Post to PO Box 414, KIMBA SA 5641

Payment must be enclosed with Entry. Cheques to be made out to Kimba AH&F Society or Direct Deposit to BSB: 105 162 Account: 17732340

Please Quote **Sect. A & name** in reference area and note date paid and internet banking receipt number here: _____ or email receipt

with entries. All rules, programmes, entry and waiver forms along with general information can be found on ShowDay Online or at www.kimbashow.com.au



Kimba AH & F Society Show

September 20, 2025



Ring 2 Hack Classes, Ring 3 Tiny Tots and Led Breed Classes

Entry Form ~ One Per Horse Please

Horse's Name: _____

Rider's Name: _____ Riders Age (junior): _____

EA Number (if applicable): _____ PIC Number (compulsory): _____

Entry Information		
Ring 2 – Open Show Horse, Show Hunter & Rider Classes	Ring 3 – Led Breed Classes Only	Ring 3 – Tiny Tots, Led Breeds Ring
Entry - \$25 per horse (includes led breed classes)	Entry - \$5/class <i>only if not entering any other ridden class</i>	Entry - \$25 per horse (includes ring 2 classes)

All horse entries to convenor by **Wednesday 17 September, 2025** please.

Late entries will be taken but will attract a \$10 late fee.

Email: horses@kimbashow.com.au or Post to PO Box 414, KIMBA SA 5641

Ring	Class Number(s)	Entry \$
Name:		Entry Sub Total
Address:		Camping Fee \$10
Email:		Yards ____ @ \$10
Phone:		
		Grand Total

Membership –all adult tickets purchased will include membership.

Tickets must be pre-purchased with entries <https://showday.online/show/kimba> prior to show day.

Payment must be enclosed with Entry. Cheques to be made out to Kimba AH&F Society or Direct Deposit to BSB: 105 162 Account: 17732340 Please Quote **Sect. A & name** in reference area and note date paid and internet banking receipt number here: _____

or email receipt with entry to horses@kimbashow.com.au

All rules, programmes, entry and waiver forms along with general information can be found at

<https://showday.online/show/kimba> www.kimbashow.com.au