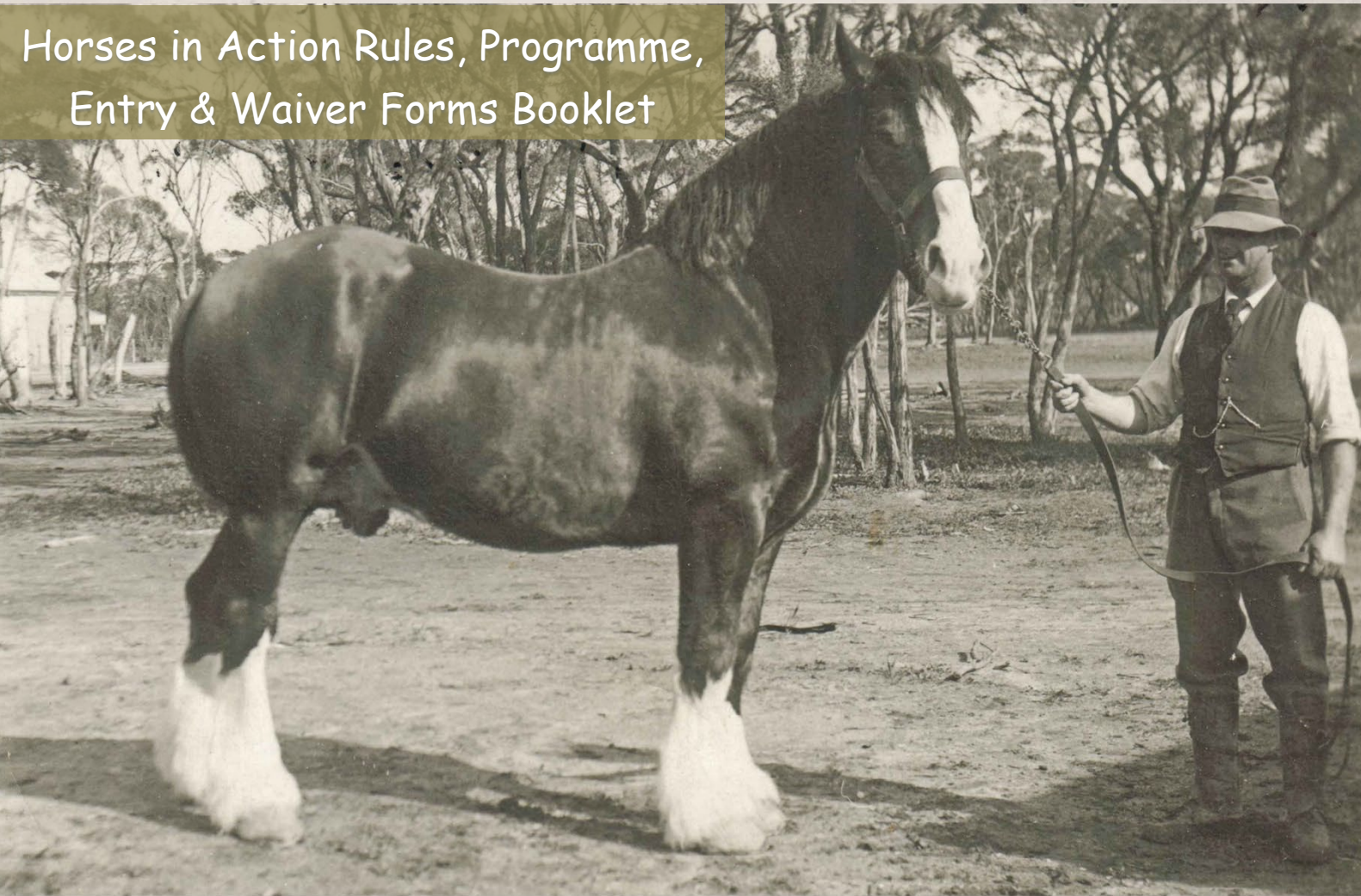


93rd KIMBA AH&F SHOW

SATURDAY SEPTEMBER 25TH, 2021

Horses in Action Rules, Programme,
Entry & Waiver Forms Booklet



"CELEBRATING 100 YEARS"
1921 - 2021

www.kimbashow.com.au

President: Courtney Johnson

Secretary: Emily Maxwell

General Rules & Conditions of Entry - Competitors must familiarise themselves with the general rules and conditions of entry as well as information specific to individual competitions/rings.

ENTRIES, GATE TICKETS & MEMBERSHIP

1. Horse entries close Wednesday September 22nd, 2021 to: Email horses@kimbashow.com.au; or post to: PO Box 414, KIMBA SA 5641. Late entries will be accepted but not preferred.
2. **MEMBERSHIP:** All exhibitors must be a member of Kimba AH&F Society Inc. **Due to Covid-19 in 2021 membership is included in the gate tickets. Tickets must be purchased online prior to the show through Eventbrite or contact the convenor.**
3. Entry fees include compulsory insurance.
4. All exhibitors and horses enter at their own risk and must sign a waiver upon entering.
5. The Kimba AH&F Society Inc. shall not be responsible for any damage or injury occasioned to any exhibit or property of any exhibitor(s) from any cause whatsoever.
6. The Kimba AH&F Society Inc. reserves the right (on veterinary advice) to refuse any animal, if judged unfit or diseased, to take part in any way, and for the animal to be removed from the grounds. Veterinary's decision is final.

RULES, SAFETY & GOVERNANCE

7. The Kimba AH&F show will be conducted in accordance with the rules, regulations and bi-laws of EA Australia www.equestrian.org.au. Competitors are advised it is their responsibility to read and abide by the EA rules of competition.
8. Competitors may enter in any or all rings provided rules are abided by as per each ring.
9. All rings will run concurrently. See individual ring programmes for starting times.
10. Conflict of classes. The programme has been prepared to avoid delays in competition, however, if there are potential clashes, the competitor must advise the stewards or convenors. Similarly, if a competitor withdraws from classes please advise stewards so classes are not held up waiting.
11. The organising committee and ground jury reserve the right to alter the programme, judges or schedule. The show society reserves the right to combine, alter or delete classes with insufficient entries.
12. Random swabbing may take place at this show. The Kimba AH&F Society Inc. reserves the right to test any animal for drug or stimulant, but will not be held responsible for any injury or death caused by such a test. The bylaws on the test and swabbing approved by the SA branch of EA apply.
13. STALLIONS are permitted in all rings except show hack and hunter classes but must be handled or ridden at all times by a person over 18 years; under adequate control at all times; display the required stallion identification disc.
14. Should a competitor require a strapper to hold a horse in the ring they must be suitably attired with full covered shoes on.
15. All riders anywhere on the grounds are required to wear EA approved safety helmets and boots whilst mounted. Please check your helmets are compliant to current regulations.
16. All horse and rider gear including saddlery and riding apparel must be in good condition and working order. Random checks for safety of gear may take place. Any competitor with gear deemed to be unsafe will not be allowed to compete.
17. The judge's decision is final, subject to all other conditions being met.
18. All protests shall be in writing to the Secretary accompanied by a \$20 protest fee, to be lodged with the convenor no later than 30 minutes after the event.
19. Dogs must be kept on a leash at all times.

YARDS & CAMPING

20. Horse stalls are available at \$10 per stall for the weekend. All bedding and manure must be removed from stalls onto designated heaps before departure.
21. Overnight camping is welcome. A fee of \$10 applies with use of showers in the sporting complex included. Camping and stall fees are to be paid with entries.
22. There are NO Eftpos or ATM facilities at Kimba Recreation Reserve. There is an ATM at ANZ Bank, High Street Kimba.
23. Lunch breaks will be notified via public address system to suit events where possible.
24. All rules, regulations, programmes and entry forms are available at www.kimbashow.com.au

RING 1 - SHOWJUMPING

25. It is the competitor's responsibility to make themselves familiar with Kimba AH&F Society Inc., Equestrian Australia, and F.E.I. rules prior to exhibiting horses in Ring 1.
26. Ring 1 is affiliated with Equestrian South Australia, where classes are official and all classes will be run under EA rules as amended, which can be found at www.equestrian.org.au/jumping-rules
27. All horses entered in official Show Jumping events must be registered with EA, carry current performance cards. All owners must be current EA members. Failure to comply **may** result in withholding of prize money and disqualification.
28. **Juniors:** Athletes may take part in competitions for Junior's until the end of the calendar year they reach the age of 18. Juniors can compete in Championships, Royal Shows and competitions which count for grading from the beginning of the calendar year in which they reach the age of 12 years.
29. No horse may have more than 3 class starts on any day, without express permission from the ground jury, (if a horse fails to complete 2 first rounds an exemption MAY be granted at the ground jury's discretion).
30. In classes 1-9, horses may compete in a maximum of 3 events per day. Events where prize money totals \$100 or more horses must be registered with EA and hold a current competition licence.

RING 2

31. At Kimba AH&F Show, all classes for ponies, galloways and hacks in the open show hunter, show hack and rider classes will be "open to all competitors" for the purpose of royal show qualifications but with no restriction in regards to affiliation.
32. It is the competitor's responsibility to make themselves familiar with Kimba AH&F rules and EA rules prior to exhibiting / showing horses in ring 2.
33. Ring 2 will be run under EA rules as amended, which can be found at www.equestrian.org.au under Show Horse.
34. Riders age to be their age on the day of the show.
35. All local events must be a local horse ridden by a local rider. A local horse to be owned or leased by a local resident in the local Kimba area. (including Waddikee and Buckleboo) for a minimum of 3 months prior to the event.
36. All Pony Club events to be ridden in official PC uniform and riders to be financial members of a pony club. If riding as an Interschool competitor, the rider must be in the uniform of the school they attend and are representing.
37. All riders must wear EA approved helmets and riding boots at all times whilst mounted.
38. Riders age to be their age on the day of the show.
39. Persons leading horses/ponies must wear appropriate covered shoes or boots.
40. Tiny Tot riders to be 10 years and under, classes are open to led riders only and are for riders unable to ride unassisted.
41. Tiny Tots are eligible to compete in any other open event but must remain led at all times during the show in all rings.
42. Tiny Tot's lead-rein preferably to be attached to the horse's noseband.
43. Pairs Events can be entered singly and paired on grounds.
44. Riders and Horses may compete in any or all rings, but classes may not be held up.
45. All horses must be bitted and handlers must wear appropriate attire including covered shoes.

DEFINITIONS

46. **Maiden:** Maiden classes are for horses that have never won a first place at any agricultural show or gymkhana.
47. **Novice:** Horse/rider who has not won an open championship in an Open hack/rider class at an Agricultural/affiliated show.
48. **Pony:** 14 hands and under
49. **Galloway:** Over 14hh and not exceeding 15 hands
50. **Hack:** Over 15hh
51. **Show Hunter:** A more solid type of show horse displaying heavier bone structure than a show hack
52. **Weight Classes:** Horses in lightweight classes are not eligible for heavyweight classes and vice versa



Kimba AH&F Society Inc are very excited to have 2 Police Greys and their team from the SAPOL Mounted Operations coming to visit us on our Centenary show day. To find out a bit about their history visit:
<https://southaustralianpolicehistoricalsociety.com/learn/history-of-police-greys/>



We are a country clothing, fodder and saddlery business located in country South Australia. Visit our website for a comprehensive overview of the items we stock including RM Williams, Ariat, Wrangler, Akubra, Blue Dog, Thomas Cook and Bullzeye to name a few.

Country Clothing, Boots & Hats, Work Wear and Safety Wear, Swags, Whips and Cowboy accessories, Saddlery and Horse Supplies, Animal Feed Supplies, Giftware and Accessories, Veterinary Supplies, Seed and Fodder

National Highway 1, Pt Augusta SA 5700

PHONE: 08 8642 2038 FAX: 08 8642 2009

EMAIL: info@rangescountry.com.au

WEB: www.rangescountry.com.au

Section A – Horses in Action

Rules & Information cont.

ENTRY AND PRIZE INFORMATION		
All Horses in Action Enquiries and Entries to Convenors via phone or email: horses@kimbashow.com.au		
All programmes, entry details, waivers and entry forms can be found in a separate HIA booklet on the show website		
Competitors must familiarise themselves with the general rules and conditions of entry as well as information specific to individual competitions/rings. All competitors must be a financial member of Kimba AH&F Society Inc. Membership this year only is included with Gate Entry Tickets which must be pre-purchased online through Eventbrite (see entry form for link). Camping and yards are available and must be booked and paid with entries.		
Entries Close Wednesday September 22nd, 2021 ~ Late entries will be accepted but not preferred		
Email: horses@kimbashow.com.au Post to: Kimba AH&F Society Inc. PO Box 414, KIMBA SA 5641		
Ring 1 – Showjumping Entries as stated per each class	Entries & Prizes - as stated per each class Trophies - The following trophies are to be awarded through points gained in the show jumping rings at affiliated shows of EPSA. Results for these trophies are collated by the EP Show jumping Club. Carr-LeBrun Cup for most points gained by a junior horse and rider combination. <i>Donated by Bill and Lynette LeBrun</i> Boylan Cup for most points gained by a senior horse and rider combination. <i>Donated by The Boylan Family</i> Traeger Trophy: for horse with the most clear rounds, junior and senior. <i>Donated by Helen and Gavin Traeger</i>	
Ring 2 – Hack and Games Ring	Entry - \$20 per horse (Includes Led/Handler Classes in Ring 3)	1 st \$5 2 nd \$3 or various prizes and vouchers
Ring 3 - Led Classes 65-103 Only (if not competing in ridden classes)	\$3/class only if not competing in any ridden classes	Breed Champion Winners 1 st \$5 2 nd \$3 or various prizes and vouchers
Ring 3 – Tiny Tots Classes 104-113	\$10 per combination only if not entering any other ridden classes	1 st \$5 2 nd \$3 or various prizes and vouchers
Competitors may enter classes in Rings 1, 2 & 3 but classes will not be held up.		

Section A – Horses in Action

Ring 1 Showjumping

Convenor – Katie Eatts 0428 340 255

Email: horses@kimbashow.com.au

Saturday September 25th, 2021 – 10am start

PLEASE NOTE: In classes 1-9, horses may compete in a maximum of 3 events per day. Events where prize money totals \$100 or more horses must be registered with EA and hold a current competition licence.

CLASS	1 st	2 nd	3 rd	Entry
1. Showjump 40cm.....	Ribbon for 2 clear rounds			2.00
All competitors may complete 2 rounds Second round to be raised.				
2. Showjump 60cm Article 238.2.2	15.00	10.00	5.00	2.50
3. Showjump 70cm Article 238.2.2	15.00	10.00	5.00	2.50
4. Showjump 80cm Article 238.2.2	20.00	15.00	10.00	2.50
5. Showjump 95cm Article 238.2.2	25.00	15.00	10.00	3.00
6. Showjump 1.05m Article 238.2.2	50.00	30.00	20.00	6.00
7. Showjump 1.15m Article 238.2.2	55.00	35.00	25.00	6.50
8. Showjump 1.20cm Article 238.2.2	60.00	40.00	30.00	7.00
9. One Round Stakes 110cm (Table C) Article 239.....	55.00	35.00	25.00	6.50



HOW TO TIME YOUR JUMPS



Section A – Horses in Action

Ring 2 – Open

Convenor – Caitlin Schaefer 0439 681 677

Email: horses@kimbashow.com.au

Saturday September 25th, 2021 – 10am start

Show Horse & Show Hunter Hacks, Galloways & Ponies

Please ensure familiarise yourself with the rules have an up to date programme by checking the Kimba Show website www.kimbashow.com.au/competitions. Any changes to program will be posted on the show website & Facebook page.

Show Pony Classes

- 10. Novice Pony ne 14hh
- 11. Pony ne 12hh
- 12. Pony over 12hh ne 13hh
- 13. Pony over 13hh ne 14hh
- 14. Lightweight Pony ne 14hh
- 15. Heavyweight Pony ne 14hh
- 16. Open Pony ne 12hh
- 17. Open Pony over 12hh ne 14hh
- 18. **Champion and reserve Champion Pony**
Winners from classes 10-17 eligible

Show Hunter Pony Classes

- 19. Novice Show Hunter Pony ne 14hh
- 20. Show Hunter Pony ne 12hh
- 21. Show Hunter Pony over 12hh ne 13hh
- 22. Show Hunter Pony over 13hh ne 14hh
- 23. Lightweight Show Hunter Pony ne 14hh
- 24. Heavyweight Show Hunter Pony ne 14hh
- 25. Open Show Hunter Pony ne 12hh
- 26. Open Show Hunter Pony over 12hh ne 14hh
- 27. **Champion & Reserve Show Hunter Pony**
Winners from classes 19 – 26 eligible

Show Galloway Classes

- 28. Novice Galloway over 14hh & ne 15hh
- 29. Galloway over 14hh & ne 14.2hh
- 30. Galloway over 14.2hh & ne 15hh
- 31. Lightweight Galloway over 14hh & ne 15hh
- 32. Heavyweight Galloway 14hh & ne 15hh
- 33. Open Galloway over 14hh & ne 15hh
- 34. **Champion & Reserve Champion Galloway**
Winners from classes 28-33 eligible

Open Junior Rider Classes

- 35. Rider 8 years and under
- 36. Rider 9 years and under 12 years
- 37. Rider 12 years and under 15
- 38. Rider 15 years and under 17 years
- 39. **Champion Junior Rider classes 35-38 eligible**

40. Local Pony, Galloway or Hack

Open Senior Rider Classes

- 41. Rider 17 years and under 21 years
- 42. Rider 21 years and over
- 43. **Champion Senior Rider**
Winners from classes 41-42 eligible

Show Hunter Galloway Classes

- 44. Novice Show Hunter Galloway 14hh & ne 15hh
- 45. Show Hunter Galloway over 14hh & ne 14.2hh
- 46. Show Hunter Galloway over 14.2hh & ne 15hh
- 47. Lightweight Show Hunter Galloway 14hh - 15hh
- 48. Heavyweight Show Hunter Galloway 14hh - 15hh
- 49. Open Show Hunter Galloway over 15hh ne 16hh
- 50. **Champion & Reserve Show Hunter Galloway**
Winners from classes 44 – 49 eligible

Show Hack Classes

- 51. Novice Hack over 15hh
- 52. Hack over 15hh & ne 16hh
- 53. Hack over 16hh & over
- 54. Lightweight Hack over 15hh
- 55. Heavyweight Hack over 15hh
- 56. Open Hack over 15hh
- 57. **Champion & Reserve Champion Hack**
Winner from classes 51-56 eligible

Show Hunter Hack Classes

- 58. Novice Show Hunter Hack over 15hh
- 59. Show Hunter Hack over 15hh ne 16hh
- 60. Show Hunter Hack over 16hh
- 61. Lightweight Show Hunter Hack over 15hh
- 62. Heavyweight Show Hunter Hack over 15hh
- 63. Open Show Hunter Hack over 15hh
- 64. **Champion & Reserve Show Hunter Hack**
Winners from classes 58-64 eligible

Supreme Champion Exhibit

Kindy sponsored by Leah Harradine - to be judged immediately after the conclusion of classes in Ring 2.
Winners eligible from classes 18, 27, 34, 50, 57, 64

Led Breed Classes

Note – to save time, all breed classes will be judged as a group (e.g. all Shetland's together) with winner of each class receiving a ribbon. Champions to be chosen from these class winners.

Smartest on Parade

- 65. Led Smartest on Parade 10 years & under
- 66. Led Smartest on Parade 11 years & under 18
- 67. Led Smartest on Parade 18 years & over

Handlers

- 68. Junior Handler 10 years & under
- 69. Junior Handler 11 years & under 18
- 70. Senior Handler 18 years & over

Miniature Pony

- 71. Led Miniature filly or mare
- 72. Led Miniature colt/gelding or stallion

Champion Miniature Led Exhibit

Shetland Pony

- 73. Led Shetland Pony filly or mare
- 74. Led Shetland Pony colt/gelding or stallion
- 75. **Champion Shetland Pony Led Exhibit**

Welsh

- 76. Led welsh filly or mare
- 77. Led welsh colt/gelding or stallion
- 78. **Champion Welsh Led Exhibit**

Riding Pony

- 79. Led Riding Pony or mare
- 80. Led Riding Pony colt/gelding or stallion
- 81. **Champion Riding Pony Led Exhibit**

Thoroughbred

- 82. Led Thoroughbred filly or mare
- 83. Led Thoroughbred colt/gelding or stallion
- 84. **Champion Thoroughbred Led Exhibit**

Quarter Horse

- 85. Led Quarter Horse filly or mare
- 86. Led Quarter Horse colt/gelding or stallion
- 87. **Champion Quarter Horse Led Exhibit**

Coloured Breed

- 88. Led Coloured filly or mare
- 89. Led Coloured colt/gelding or stallion
- 90. **Champion Coloured Breed**

Australian Stock Horse

- 91. Led ASH filly or mare
- 92. Led ASH colt/gelding or stallion
- 93. **Champion Australian Stock Horse Led Exhibit**

Standardbred

- 94. Led Standardbred filly or mare
- 95. Led Standardbred colt/gelding or stallion
- 96. **Champion Standardbred led Exhibit**

Heavy Horse

- 97. Led Heavy Horse filly or mare
- 98. Led Heavy Horse colt/gelding or stallion
- 99. **Champion Heavy Horse Led Exhibit**

Any Other Breed

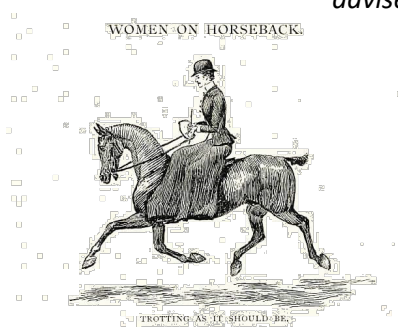
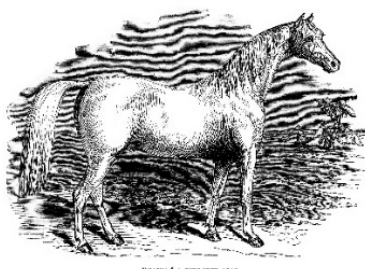
- 100. Led any other breed filly or mare
- 101. Led any other breed colt/gelding or stallion
- 102. **Champion any other breed Led Exhibit**

Supreme Champion Led Exhibit

Champion Winners of Each Led Breed Class eligible

Tiny Tots (to be judged in the lunch break)

- 103. Tiny Tot Smartest on Parade
- 104. Tiny Tot Leading Rein mount
- 105. Tiny Tot Beginners mount
- 106. Tiny Tot Rider
- 107. Tiny Tot Monte Carlos (spin the bottle)
- 108. Hairiest Pony
- 109. Friendliest Pony
- 110. Quietest Pony
- 111. Longest Tail
- 112. Fancy Dress (time will be given to get ready and judged separately to other classes). *Time will be advised on the day.*





KIMBA AH & F SOCIETY SHOW

SATURDAY SEPTEMBER 25TH, 2021

SHOWJUMPING ENTRY FORM



Official Events where prize money totals \$100 or more are conducted under current EA Rules as amended

Details		Showjumping Events											
Riders Name	Horses Name	EA # if applicable	PIC # Compulsory	1 \$2.00	2 \$2.50	3 \$2.50	4 \$2.50	5 \$3.00	6 \$6.00	7 \$6.50	8 \$7.00	9 \$6.50	Total
Sub Totals													
Name:									Entries Total				
Address:									Camping \$10				
Email:		Phone:							Stables ____ @ \$10				
Membership – this year only, all adult tickets purchased will include membership. Tickets must be pre-purchased prior to show day through Eventbrite.													
https://tinyurl.com/KAHF-Show-2021									Grand Total				

All horse entries to be received by **Wednesday September 22nd, 2021** please.

Email: horses@kimbashow.com.au or Post to PO Box 414, KIMBA SA 5641

Payment must be enclosed with Entry. Cheques to be made out to Kimba AH&F Society or Direct Deposit to BSB: 105 162 Account: 17732340

Please Quote **Sect. A & name** in reference area and note date paid and internet banking receipt number here: _____ or email receipt

with entries. All rules, programmes, entry and waiver forms along with general information can be found at www.kimbashow.com.au

Agricultural Societies Council of South Australia Incorporated

Horse Sports Participants Indemnity and Waiver

Agricultural Societies Council of South Australia Incorporated

Name and Date of Event

HORSE HANDLING PARTICIPANT RISK ACKNOWLEDGEMENT & WAIVER

Name of Participant:

Participant Address:

Contact Number of Participant:

Email:

Agricultural Societies Council of South Australia Inc and **(Name of Show)**..... (together **the Suppliers**) advise that participation (including passive participation) in animal handling at an agricultural show contains elements of risk, both obvious and inherent. The handling of animals is a dangerous recreational activity as animals can act in a sudden and unpredictable way, especially when frightened or hurt.

1. By signing this waiver I acknowledge that:
 - 1.1 participation in animal handling is a recreational service for the purposes of section 139A of the **Competition and Consumer Act (Cth) 2010**, and also a recreational activity for the purposes of Section 42 of the **Fair Trading Act (1987) SA**;
 - 1.2 participation in animal handling is a hazardous activity and may result in injury, loss, damage or death to me;
 - 1.3 participation in animal handling requires certain skills and experience. I declare that I have sufficient skills and experience to be able to safely and properly participate in the events;
 - 1.4 animals can act in a sudden and unpredictable ways, especially if frightened or hurt, or if exposed to loud or unfamiliar noises;
 - 1.5 animal showing events will be held in close proximity to rides and large groups of people, and that there may be loud and unfamiliar noises which can frighten animals;
 - 1.6 if the event is held outdoors, there are risks to me as a result of the weather conditions, including either extreme hot or cold weather, rain or wind;
 - 1.7 insects or other animals may cause animals to become frightened and act in an unpredictable way;
 - 1.8 there is inherent in events involving the handling of animals the risk of suffering injury including injuries caused by animals; and
 - 1.9 I use the facilities supplied for the event entirely at my own risk, as I find them and with the prior acceptance of the risk of possible danger to me.
2. If I suffer injury, loss or damage (Loss) while participating in an animal handling event, I will not hold the Suppliers, their employees or agents legally responsible for any Loss I suffer. I will not sue the Suppliers, their employees or agents for any claims, costs, damages or liability. I agree to release the Suppliers and their employees from legal responsibility for the services I have been provided and/or activity I have participated in.
3. I acknowledge and agree that my participation in the event and associated activities is dangerous and may have inherent risks as a result of which personal injury (and sometimes death) may occur. I acknowledge that the event and associated activities carry with them a significant risk of physical harm. I accept and assume all such risks of personal injury or death in anyway whatsoever arising from these activities and hereby waive my individual right to sue the Suppliers for all claims I or my representatives may have for such personal injury or death against the Suppliers in any way whatsoever arising from or in connection with these activities.
4. At the time of participating in the event, I have not been to any degree under the influence of alcohol or illicit drugs.
5. I will not consume any alcohol or illicit drugs while participating in the Event and agree that such use may result in my being excluded from the Event or other events with no entitlement to any refund of money paid for entry to the Suppliers.
6. I agree to be bound by the rules and guidelines of the Agricultural Societies Council of South Australia Inc as varied from time to time.

<u>Name of Horse</u>	<u>Owner of horse</u>	<u>Microchip No. or Reg. No. or Description (sex, colour, brand).</u>	<u>Pic. No.</u>	<u>Last Event & Date</u>

I, the owner/rider/exhibitor of the above horse/s, declare that, to the best of my knowledge, it is/they are fit and healthy and I agree that if found to be otherwise it/they will not be allowed to compete at this event.

Signature Date

Where the participant is over 18 years of age:

I agree that I have read and understood this waiver prior to signing it and agree that this waiver will be binding on my heirs, next of kin, executors and administrators.

I acknowledge that the Suppliers have permitted me to participate in the activity the subject of this document in reliance upon the matters acknowledged by me and the representations I have made herein.

I agree that this waiver shall be governed in all respects by and interpreted in accordance with the laws of South Australia.

Signature:..... Dated:...../...../.....

Where the participant is under 18 years of age (to be completed by a parent or guardian):

Participant's Date of Birth.....

I, being a parent or legal guardian of the above named participant hereby consent to my child participating in this event.

I confirm that I have read and understood and explained to the participant, this waiver prior to signing it and agree that this agreement will be binding on my (and his/her) heirs, next of kin, executors and administrators.

I acknowledge that the Suppliers have permitted the participant to participate in the activity the subject of this document in reliance upon the matters acknowledged by me and the representations I have made herein.

I agree that this waiver shall be governed in all respects by and interpreted in accordance with the laws of South Australia.

Signature: Dated:/...../.....